



**PRIST**  
DEEMED TO BE  
**UNIVERSITY**  
NAAC ACCREDITED  
THANJAVUR - 613 403 - TAMILNADU

**Ponnaiyah Ramajayam Institute of Science and Technology**  
**[PRIST]**

**Internal Quality Assurance Cell [IQAC]**

# **“Feedback Report”**

**Academic Year : 2021**

*Verified.*  
*A.Usa*



**REGISTRAR,**  
Ponnaiyah Ramajayam Institute of  
Science & Technology (PRIST),  
(Institution Deemed to be University  
(U/s 3 of the UGC Act, 1956).  
THANJAVUR - 613 403, TAMILNADU.

## Table of Contents

S.No	Description	Page No
	<b>Report of Feedback from Stakeholders</b>	3
1	<b>Student Satisfaction Survey</b>	5
	Questionnaire	9
	Summary of the Survey	
	Analysis of the Student Satisfaction Survey	10
2	<b>Students Feedback on Infrastructure</b>	11
	Questionnaire	13
	Summary of the Survey	
	Analysis of the Student Satisfaction Survey	14
3	<b>Parents Feedback on Curriculum</b>	15
	Questionnaire	17
	Summary of the Survey	
	Analysis of the Student Satisfaction Survey	18
4	<b>Alumni Feedback on Curriculum</b>	19
	Questionnaire	21
	Summary of the Survey	
	Analysis of the Student Satisfaction Survey	22
5	<b>Employer Feedback on Curriculum</b>	23
	Questionnaire	25
	Summary of the Survey	27
	Analysis of the Student Satisfaction Survey	28



  
**REGISTRAR,**  
 Ponnaiyah Ramajayam Institute of  
 Science & Technology (PRIST)  
 (Institution Deemed to be University)  
 116-2 of the UGC Act, 1956).  
 THANJAVUR - 613 403, TAMIL NADU.

# “Feedback Report”

## Academic Year : 2021

### Feedback Report:

To enrich the quality of teaching and learning as well as to enhance employability of the students, feedback from the stakeholders is invaluable. PRIST Deemed to be University Collected online feedback relating to the satisfaction of stakeholders (Student, Alumni, Teacher Employer) towards the curriculum, teaching. Learning and evaluation. The information provided is used as important feedback for quality improvement of teaching and learning process of the institution.

**Action Taken:** The stakeholder s responses were analyzed to prepare the summarized report which was communicated with university authority.

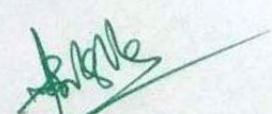
### Feedback Analysis Report:

Data was collected using online feedback forms prepared by feedback committee of the college. He responses received from the respondents are presented in terms of bar diagrams. Total 1628 responses student Submitted their views on curriculum.

#### 1. Students' feedback on curriculum:

1. Most of the students have the opinion that the course content has job relevance and the present syllabus is career-oriented.
2. Most are satisfied with teaching quality, academic atmosphere and reference materials available in the University.



  
REGISTRAR,  
Ponnaiyah Ramajayam Institute of  
Science & Technology (PRIST)  
(Institution Deemed to be University  
U/s 3 of the UGC Act, 1956),  
THANJAVUR - 613 403, TAMIL NADU.

3. The curriculum is capable of supporting students in higher studies and cater to their entrepreneurial skills.

Student satisfaction Survey

[https://forms.office.com/Pages/ResponsePage.aspx?id=FBibGV67EEu-3218Y8Un1buk8hDE\\_qhPvdOgQ99Jjw1URVZCN1JVRfdSQ0hIQloXQ1JZN1FSVENBMC4u](https://forms.office.com/Pages/ResponsePage.aspx?id=FBibGV67EEu-3218Y8Un1buk8hDE_qhPvdOgQ99Jjw1URVZCN1JVRfdSQ0hIQloXQ1JZN1FSVENBMC4u)

is available on the University Website.

## 2. Employers' Feedback on curriculum:

Employers' feedback is taken in hard copy format and also through [https://forms.office.com/Pages/ResponsePage.aspx?id=FBibGV67EEu-3218Y8Un1buk8hDE\\_qhPvdOgQ99Jjw1URUZMVVE1VVIKWU1RS09MUEo1RUZVS1ZRQy4u](https://forms.office.com/Pages/ResponsePage.aspx?id=FBibGV67EEu-3218Y8Un1buk8hDE_qhPvdOgQ99Jjw1URUZMVVE1VVIKWU1RS09MUEo1RUZVS1ZRQy4u)

Analysis shows that:

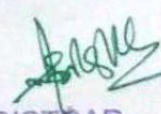
- Most of the employers have the opinion that the curriculum has relevance to the industrial needs and are happy with the soft-skills provided by the curriculum and the institution.
- Some of them have suggested that there can be more curriculum related activities.

## 3. Alumni Feedback on curriculum:

Alumni provide the inputs regarding improvement in facilities and employability. The feedback from alumni on University syllabus and curriculum is collected every year in hard copy form and recently through [https://forms.office.com/Pages/ResponsePage.aspx?id=FBibGV67EEu-3218Y8Un1buk8hDE\\_qhPvdOgQ99Jjw1UOTBCOTVNTjAyUTkxTFIWWTFNQVDFDVE80UC4u](https://forms.office.com/Pages/ResponsePage.aspx?id=FBibGV67EEu-3218Y8Un1buk8hDE_qhPvdOgQ99Jjw1UOTBCOTVNTjAyUTkxTFIWWTFNQVDFDVE80UC4u)

Analysis shows that:



  
REGISTRAR,  
Ponnaiyah Ramajayam Institute of  
Science & Technology (PRIST),  
(Institution Deemed to be University  
U/s 3 of the UGC Act, 1956).  
THANJAVUR - 613 403, TAMIL NADU.

- Most of the alumni are satisfied with the course content and opine that the career-oriented syllabus was helpful in getting a job after their graduation/post-graduation/Research.
- Most are happy with Computer Laboratories, University library, Seminars, Guest lectures and Workshops conducted and Projects and Field visits.
- They feel that the institution supports higher learning and the curriculum provided in the college caters to the entrepreneurial skills of the students.

#### 4. Parents Feedback on curriculum:

Being the special stakeholders of the institution, parents' feedback especially on curricular aspects is collected regularly basis. Feedback is collected in hard copy as well as through [https://forms.office.com/Pages/ResponsePage.aspx?id=FB1bGV67EEu-3218Y8Un1buk8hDE\\_qhPvdOgQ99JJw1UMDdNUiIMMTNLNIJBOTJGNTE4N0g2QIIMOS4](https://forms.office.com/Pages/ResponsePage.aspx?id=FB1bGV67EEu-3218Y8Un1buk8hDE_qhPvdOgQ99JJw1UMDdNUiIMMTNLNIJBOTJGNTE4N0g2QIIMOS4)

#### Analysis shows that:

- Most parents find this college a better institution, being satisfied with the infrastructure library and lab facilities available in the University.
- They have a good opinion about the quality and relevance of courses prescribed in the curriculum by PRIST Deemed to be University.
- Most feel that the curriculum is students centric and soft skill development is possible through the curriculum delivery mechanism followed by the University.



*[Handwritten Signature]*  
**REGISTRAR,**  
 Ponnaiyah Ramajayam Institute of  
 Science & Technology (PRIST),  
 (Institution Deemed to be University  
 U/s 3 of the UGC Act. 1956),  
 THANJAVUR - 613 403, TAMIL NADU.

## Students Satisfaction Survey

S.no	Parameter	4	3	2	1	0
1	How much of the Syllabus was covered in the class?					
2	How well did the teachers prepare for the classes?					
3	How well were the teachers able to communicate?					
4	The teacher's approach to teaching can best be described as					
5	Fairness of the internal evaluation process by the teachers.					
6	Was your performance in assignments discussed with you?					
7	The institute takes active interest in promoting internship, student exchange , field visit opportunities for students					
8	The teaching and mentoring process in your institution facilitates you in cognitive, social and emotional growth.					
9	The institution provides multiple opportunities to learn and grow.					
10	Teachers inform you about your expected competencies , course outcomes and programme outcomes.					
11	Your mentor does a necessary follow-up with an assigned task to you.					
12	The teachers illustrate the concepts through examples and applications.					
13	The teachers identify your strengths and encourage you with providing right level of challenges.					
14	Teachers are able to identify your weaknesses and help you to overcome them.					
15	The institution make effort to engage students in the monitoring, review and continuous quality improvement of the teaching learning process.					

16	The institute / teachers use student centric methods , such as experimental learning , participative learning and problem solving methodologies for enhancing learning experiences.					
17	Teachers encourage you to participate in extracurricular activities.					
18	Efforts are made by the institute / teachers to inculcate soft skills, life skills and employability skills to make you ready for the world of work					
19	What percentage of teachers use ICT tool such as LCD projector, Multimedia, etc. while teaching.					
20	The overall quality of teaching-learning process in your institute is very good.					

## Summary of the Survey

S.no	Parameter	4	3	2	1	0	Total
1	How much of the Syllabus was covered in the class?	194	118	53	46	38	449
2	How well did the teachers prepare for the classes?	139	227	45	13	25	449
3	How well were the teachers able to communicate?	190	120	93	26	20	449
4	The teacher's approach to teaching can best be described as	146	122	128	32	21	449
5	Fairness of the internal evaluation process by the teachers.	188	148	75	27	11	449
6	Was your performance in assignments discussed with you?	189	147	65	35	13	449
7	The institute takes active interest in promoting internship, student exchange, field visit opportunities for students	173	81	83	45	67	449
8	The teaching and mentoring process in your institution facilitates you in cognitive, social and emotional growth.	140	156	77	34	42	449
9	The institution provides multiple opportunities to learn and grow.	144	149	94	30	32	449
10	Teachers inform you about your expected competencies, course outcomes and programme outcomes.	175	150	52	42	30	449
11	Your mentor does a necessary follow-up with an assigned task to you.	168	136	74	42	29	449
12	The teachers illustrate the concepts through examples and applications.	182	147	66	33	21	449
13	The teachers identify your strengths and encourage you with providing right level of challenges.	186	126	73	29	35	449



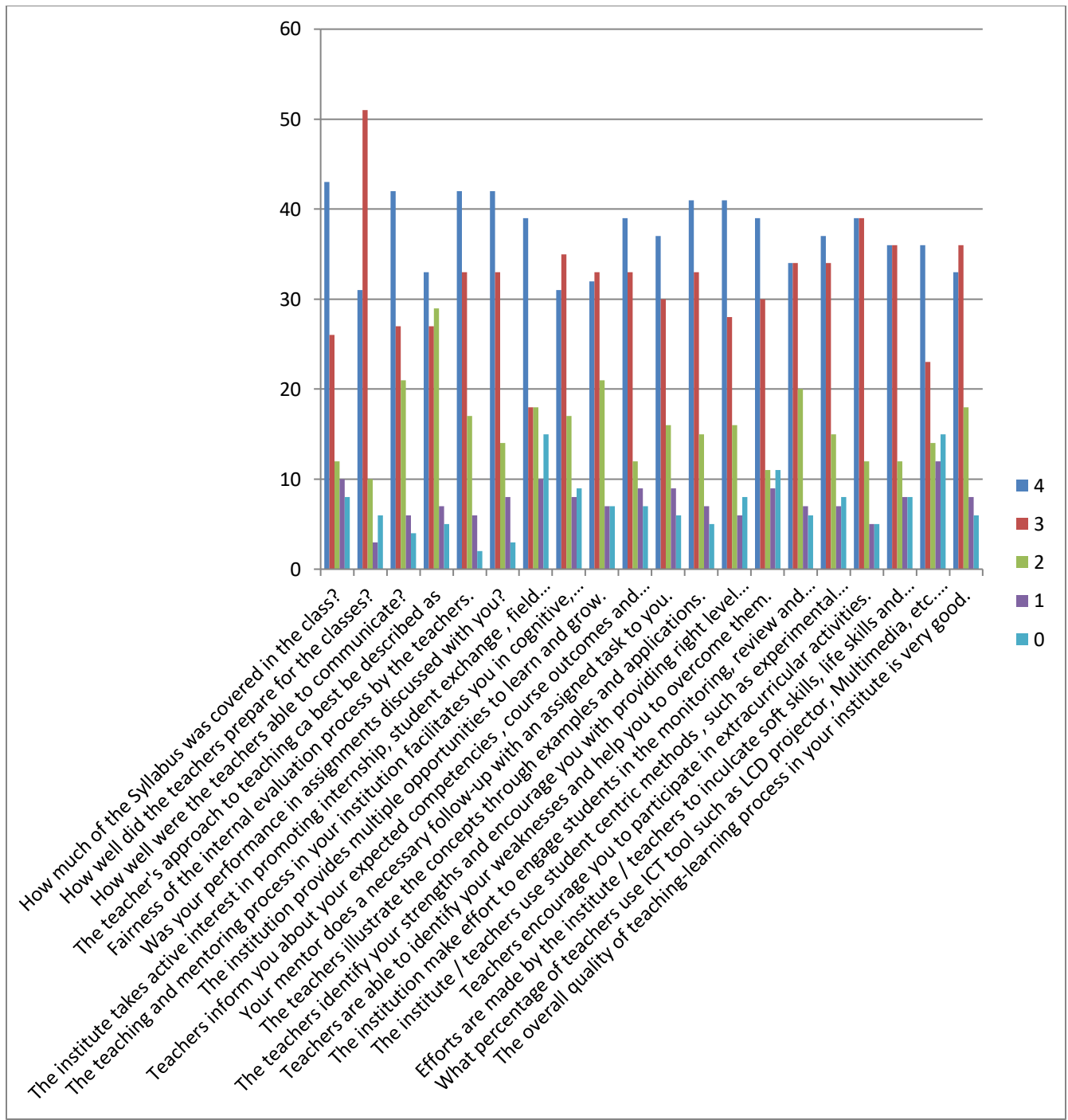
14	Teachers are able to identify your weaknesses and help you to overcome them.	176	133	51	41	48	449
15	The institution make effort to engage students in the monitoring, review and continuous quality improvement of the teaching learning process.	151	151	88	31	28	449
16	The institute / teachers use student centric methods , such as experimental learning , participative learning and problem solving methodologies for enhancing learning experiences.	164	151	69	30	35	449
17	Teachers encourage you to participate in extracurricular activities.	176	173	56	23	21	449
18	Efforts are made by the institute / teachers to inculcate soft skills, life skills and employability skills to make you ready for the world of work	160	160	56	36	37	449
19	What percentage of teachers use ICT tool such as LCD projector, Multimedia, etc. while teaching.	162	104	63	54	66	449
20	The overall quality of teaching-learning process in your institute is very good.	149	162	79	34	25	449

## Students Satisfaction survey (Percentage)

S.no	Parameter	4	3	2	1	0
1	How much of the Syllabus was covered in the class?	43%	26%	12%	10%	8%
2	How well did the teachers prepare for the classes?	31%	51%	10%	3%	6%
3	How well were the teachers able to communicate?	42%	27%	21%	6%	4%
4	The teacher's approach to teaching can best be described as	33%	27%	29%	7%	5%
5	Fairness of the internal evaluation process by the teachers.	42%	33%	17%	6%	2%
6	Was your performance in assignments discussed with you?	42%	33%	14%	8%	3%
7	The institute takes active interest in promoting internship, student exchange, field visit opportunities for students	39%	18%	18%	10%	15%
8	The teaching and mentoring process in your institution facilitates you in cognitive, social and emotional growth.	31%	35%	17%	8%	9%
9	The institution provides multiple opportunities to learn and grow.	32%	33%	21%	7%	7%
10	Teachers inform you about your expected competencies, course outcomes and programme outcomes.	39%	33%	12%	9%	7%
11	Your mentor does a necessary follow-up with an assigned task to you.	37%	30%	16%	9%	6%
12	The teachers illustrate the concepts through examples and applications.	41%	33%	15%	7%	5%
13	The teachers identify your strengths and encourage you with providing right level of challenges.	41%	28%	16%	6%	8%

14	Teachers are able to identify your weaknesses and help you to overcome them.	39%	30%	11%	9%	11%
15	The institution make effort to engage students in the monitoring, review and continuous quality improvement of the teaching learning process.	34%	34%	20%	7%	6%
16	The institute / teachers use student centric methods , such as experimental learning , participative learning and problem solving methodologies for enhancing learning experiences.	37%	34%	15%	7%	8%
17	Teachers encourage you to participate in extracurricular activities.	39%	39%	12%	5%	5%
18	Efforts are made by the institute / teachers to inculcate soft skills, life skills and employability skills to make you ready for the world of work	36%	36%	12%	8%	8%
19	What percentage of teachers use ICT tool such as LCD projector, Multimedia, etc. while teaching.	36%	23%	14%	12%	15%
20	The overall quality of teaching-learning process in your institute is very good.	33%	36%	18%	8%	6%

## **Analysis of the Student Satisfaction Survey**



## Students Feedback on Infrastructure

S.no	Parameter	3	2	1	0
1	Sports Facility				
2	Medical Facility				
3	Transport Facility				
4	Internet Facility				
5	Extra-curricular Acitivities				
6	Canteen Facilities				
7	Security Services				
8	Toilets / Washrooms are hygienic and properly maintained				
9	Availability of Clean drinking Water				
10	The Building / Classrooms are accessible to differently-abled persons				
11	Classrooms are clean and well maintained				
12	Availability of prescribed books / reading materials				
13	Availability of reading room and common room				
14	Library staff is cooperative and helpful				
15	Way of cataloging and arrangement of books in the Library is helpful				

## Summary of the Students Feedback on Infrastructure

S.no	Parameter	3	2	1	0	Total
1	Sports Facility	82	51	18	4	155
2	Medical Facility	52	84	17	2	155
3	Transport Facility	37	77	3	3	120
4	Internet Facility	47	89	13	6	155
5	Extra-curricular Acitivities	47	87	17	4	155
6	Canteen Facilities	46	90	12	7	155
7	Security Services	56	90	9	0	155
8	Toilets / Washrooms are hygienic and properly maintained	50	75	23	7	155
9	Availability of Clean drinking Water	52	78	18	7	155
10	The Building / Classrooms are accessible to differently-abled persons	100	25	22	8	155
11	Classrooms are clean and well maintained	42	96	15	2	155
12	Availability of prescribed books / reading materials	41	99	6	9	155
13	Availability of reading room and common room	44	88	20	3	155
14	Library staff is cooperative and helpful	44	90	18	3	155
15	Way of cataloging and arrangement of books in the Library is helpful	59	86	7	3	155

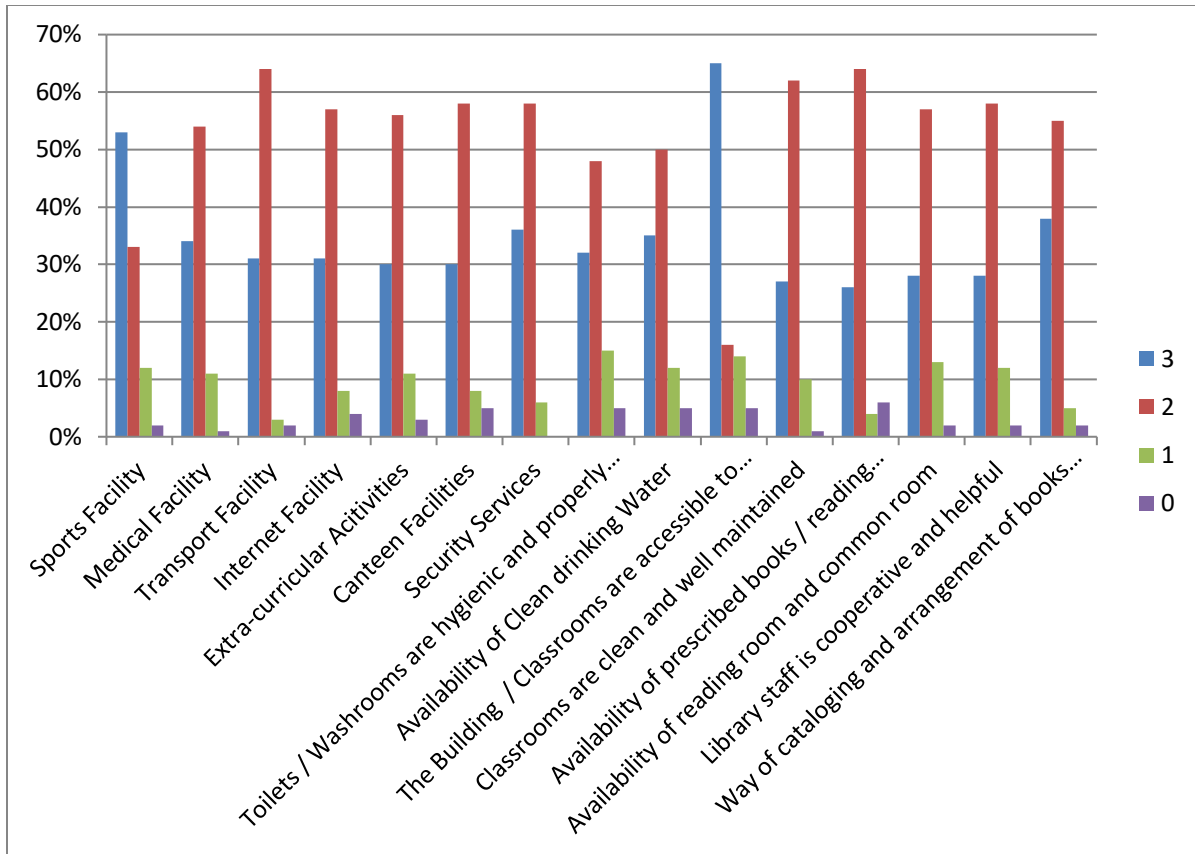
## Students Feedback on Infrastructure

(Percentage)

S.no	Parameter	3	2	1	0
1	Sports Facility	53%	33%	12%	2%
2	Medical Facility	34%	54%	11%	1%
3	Transport Facility	31%	64%	3%	2%
4	Internet Facility	31%	57%	8%	4%
5	Extra-curricular Activities	30%	56%	11%	3%
6	Canteen Facilities	30%	58%	8%	5%
7	Security Services	36%	58%	6%	0%
8	Toilets / Washrooms are hygienic and properly maintained	32%	48%	15%	5%
9	Availability of Clean drinking Water	35%	50%	12%	5%
10	The Building / Classrooms are accessible to differently-abled persons	65%	16%	14%	5%
11	Classrooms are clean and well maintained	27%	62%	10%	1%
12	Availability of prescribed books / reading materials	26%	64%	4%	6%
13	Availability of reading room and common room	28%	57%	13%	2%
14	Library staff is cooperative and helpful	28%	58%	12%	2%
15	Way of cataloging and arrangement of books in the Library is helpful	38%	55%	5%	2%

**Analysis of the Students Feedback on Infrastructure**





## Parents Feedback on Curriculum

S.no	Parameter	3	2	1	0
1	How do you rate the program that your ward is undergoing in terms of the				
2	How do you rate the availability of the Text and Reference books in the Market?				
3	How do you rate the quality of the courses included into the semester?				
4	how do you rate the teaching techniques adopted by teachers ?				
5	How do you rate the ambience of the university for effective delivery of the academic programs?				
6	How do you rate the courses in terms of their relevance to the emerging technologies?				
7	How do you rate the programs based on the comfort of your ward in coping with the workload?				
8	How do you rate the level of motivation of your ward while undergoing the programme?				
9	How do you rate the transparency of the internal evaluation system?				

## Summary of the Parents Feedback on Curriculum

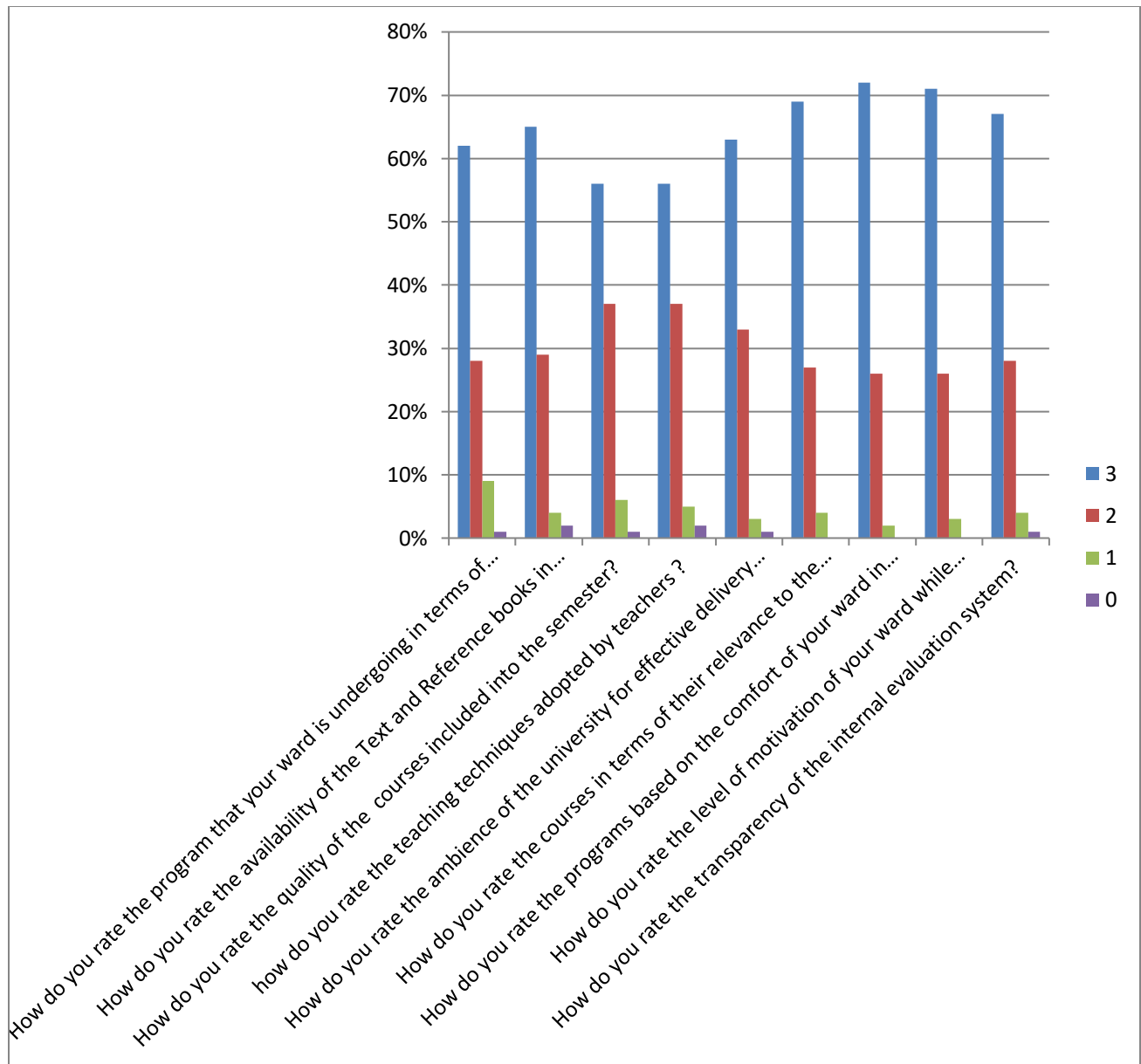
S.no	Parameter	3	2	1	0	Total
1	How do you rate the program that your ward is undergoing in terms of	90	42	14	2	148
2	How do you rate the availability of the Text and Reference books in the Market?	96	43	6	3	148
3	How do you rate the quality of the courses included into the semester?	82	55	9	2	148
4	how do you rate the teaching techniques adopted by teachers ?	83	55	7	3	148
5	How do you rate the ambience of the university for effective delivery of the academic programs?	93	49	5	1	148
6	How do you rate the courses in terms of their relevance to the emerging technologies?	102	40	6	0	148
7	How do you rate the programs based on the comfort of your ward in coping with the workload?	106	38	3	1	148
8	How do you rate the level of motivation of your ward while undergoing the programme?	105	39	4	0	148
9	How do you rate the transparency of the internal evaluation system?	99	42	6	1	148

## Parents Feedback on Curriculum

(Percentage)

S.no	Parameter	3	2	1	0
1	How do you rate the program that your ward is undergoing in terms of the	62%	28%	9%	1%
2	How do you rate the availability of the Text and Reference books in the Market?	65%	29%	4%	2%
3	How do you rate the quality of the courses included into the semester?	56%	37%	6%	1%
4	how do you rate the teaching techniques adopted by teachers ?	56%	37%	5%	2%
5	How do you rate the ambience of the university for effective delivery of the academic programs?	63%	33%	3%	1%
6	How do you rate the courses in terms of their relevance to the emerging technologies?	69%	27%	4%	0%
7	How do you rate the programs based on the comfort of your ward in coping with the workload?	72%	26%	2%	0%
8	How do you rate the level of motivation of your ward while undergoing the programme?	71%	26%	3%	0%
9	How do you rate the transparency of the internal evaluation system?	67%	28%	4%	1%

**Analysis of the Parents Feedback on Curriculum**



## Alumni Feedback on Curriculum

S.no	Parameter	3	2	1	0
1	The quality of the Program content				
2	The relevance of the curriculum				
3	The overall development you received				
4	The curriculum is skill-oriented				
5	The curriculum is job oriented				
6	The standard of the curriculum is on par with national / international Institutions				
7	The overall standards of the curriculum				

## Summary of the Alumni Feedback on Curriculum

S.no	Parameter	3	2	1	0	Total
1	The quality of the Program content	12	3	0	0	15
2	The relevance of the curriculum	5	10	0	0	15
3	The overall development you received	5	10	0	0	15
4	The curriculum is skill-oriented	8	7	0	0	15
5	The curriculum is job oriented	5	10	0	0	15
6	The standard of the curriculum is on par with national / international Institutions	6	9	0	0	15
7	The overall standards of the curriculum	8	7	0	0	15

\*Additional comments / Suggestions for improve

-Need more placement

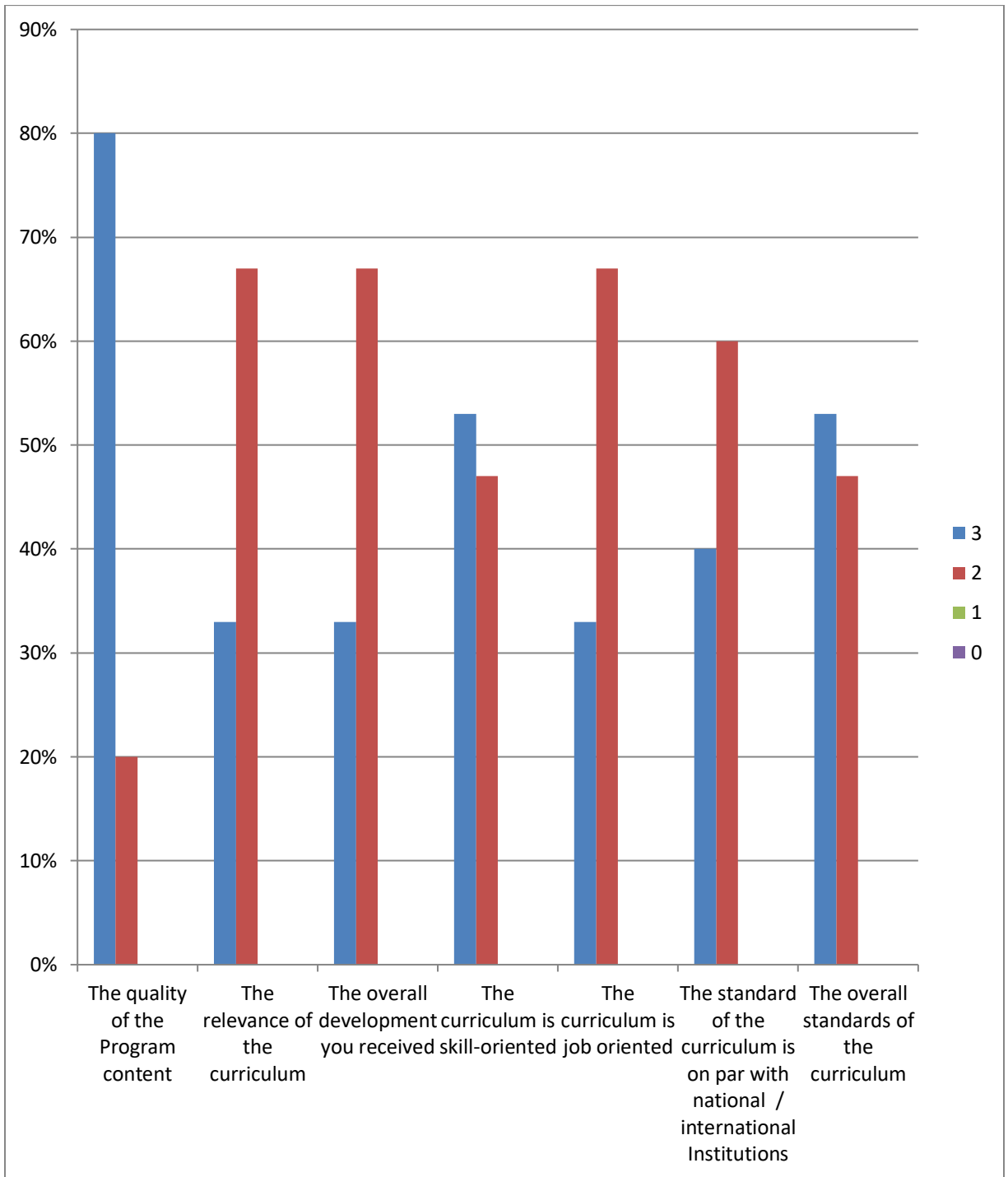
## Alumni Feedback on Curriculum

(Percentage)

S.no	Parameter	3	2	1	0
1	The quality of the Program content	80%	20%	0%	0%
2	The relevance of the curriculum	33%	67%	0%	0%
3	The overall development you received	33%	67%	0%	0%
4	The curriculum is skill-oriented	53%	47%	0%	0%
5	The curriculum is job oriented	33%	67%	0%	0%
6	The standard of the curriculum is on par with national / international Institutions	40%	60%	0%	0%
7	The overall standards of the curriculum	53%	47%	0%	0%

## **Analysis of the Alumni Feedback on Curriculum**





## Employer Feedback on Curriculum

S.no	Parameter	2	1	0
1	How do you rate relevance of the courses in relation to the program?	3	7	0
2	How do you rate the sufficiency of the courses related to industrial needs?	2	8	0
3	How to you rate the competencies / outcomes in relation to the course content?	2	8	0
4	How do you rate the relevance of the topics to the industry?	2	8	0
5	How do you rate applicability of the domains and the tools used for designing the experiments in terms of existing practices in the industry?	1	9	0
6	How do you rate the Laboratory experiments in terms of their relevance to the real life application?	2	8	0
7	How do you rate the proficiency of our students working with you?	1	9	0

## Summary of the Employer Feedback on Curriculum

S.no	Parameter	2	1	0	Total
1	How do you rate relevance of the courses in relation to the program?	3	7	0	10
2	How do you rate the sufficiency of the courses related to industrial needs?	2	8	0	10
3	How to you rate the competencies / outcomes in relation to the course content?	2	8	0	10
4	How do you rate the relevance of the topics to the industry?	2	8	0	10
5	How do you rate applicability of the domains and the tools used for designing the experiments in terms of existing practices in the industry?	1	9	0	10
6	How do you rate the Laboratory experiments in terms of their relevance to the real life application?	2	8	0	10
7	How do you rate the proficiency of our students working with you?	1	9	0	10

1. What other courses that you suggest being included in the curriculum?

*- research oriented paper need*

*-quality testing, quality assurance oriented papers to be added*

*-autoimmune diseases*

*-infectious diseases*

2. Additional comments / Suggestions for improve

*-nothing*

## Employer Feedback on Curriculum

(Percentage)

S.no	Parameter	2	1	0
1	How do you rate relevance of the courses in relation to the program?	30%	70%	0%
2	How do you rate the sufficiency of the courses related to industrial needs?	20%	80%	0%
3	How to you rate the competencies / outcomes in relation to the course content?	20%	80%	0%
4	How do you rate the relevance of the topics to the industry?	20%	80%	0%
5	How do you rate applicability of the domains and the tools used for designing the experiments in terms of existing practices in the industry?	10%	90%	0%
6	How do you rate the Laboratory experiments in terms of their relevance to the real life application?	20%	80%	0%
7	How do you rate the proficiency of our students working with you?	10%	90%	0%

## Analysis of Employer Feedback on Curriculum

