

**SUMMARY OF STUDENT FEEDBACK \* 2019 - 2020**

| S. No | Attributes  | Excellent | Very good | good | Average | poor |
|-------|---|-----------|-----------|------|---------|------|
| 1     | How do you rate the sequence of the Courses that you have studied are in sequence to what you have studied in the previous semester?  | 19        | 22        | 19   | 0       | 0    |
| 2     | How do you rate the syllabus of the courses that you have studied in relation of the competencies expected out of the course?   | 9         | 14        | 27   | 10      | 0    |
| 3     | How do you rate the relevance of the units in syllabus relevant to the course?  | 19        | 35        | 6    | 0       | 0    |
| 4     | How do you rate the sequence of the units in the course?  | 28        | 24        | 8    | 0       | 0    |
| 5     | How do you rate the allocation of the credits to the courses?   | 20        | 31        | 9    | 0       | 0    |
| 6     | How do you rate the distribution of the contact hours among the course components (L-T-P)?  | 29        | 16        | 15   | 0       | 0    |
| 7     | How do you rate the offering of the electives in terms of their relevance to the specialization streams?  | 23        | 14        | 23   | 0       | 0    |
| 8     | How do you rate the electives offered in relation to the Technological advancements?  | 13        | 28        | 19   | 0       | 0    |
| 9     | How do you rate the relevance of the Test Books and reference books by their International recognition to the courses?  | 16        | 8         | 19   | 17      | 0    |
| 10    | Rate the Size of syllabus in terms of the load on the student   | 22        | 12        | 26   | 0       | 0    |
| 11    | Rate the courses in terms of extra learning or self learning considering the design of the courses  | 16        | 26        | 18   | 0       | 0    |
| 12    | Rate the courses in terms of sequence of offering considering whether the preceding courses have been covered   | 24        | 20        | 16   | 0       | 0    |
| 13    | How do you Rate the loading of the courses in a semester  | 36        | 15        | 9    | 0       | 0    |
| 14    | How do you Rate the evaluation scheme designed for each of the course   | 16        | 18        | 13   | 13      | 0    |
| 15    | How do you rate the objectives stated for each of the course  | 27        | 14        | 19   | 0       | 0    |
| 16    | How do you rate competencies expected out of the course   | 23        | 23        | 14   | 0       | 0    |
| 17    | How do you rate the composition of the courses in terms of Basic science, Engineering science, Humanities, Discipline core, discipline elective, open elective, project etc., | 8         | 24        | 26   | 2       | 0    |
| 18    | How do you rate the percentage of courses having LAB components   | 9         | 31        | 20   | 0       | 0    |
| 19    | How do you rate the domain used for designing the experiments for the LAB components  | 14        | 10        | 28   | 8       | 0    |
| 20    | how do you rate the experiments in relation to the real life applications   | 22        | 13        | 8    | 17      | 0    |

*Princy*

DEAN

**\*60 numbers of Students took part in this study**

**School of Agriculture**  
**Ponnaiyah Ramajayam Institute of**  
**Science & Technology (PRIST)**  
 Institution Deemed to be University  
 U/S 3 of the UGC Act, 1956  
 THANJAVUR - 613 403, TAMIL NADU.

**School of Agriculture**  
**Ponnaiyah Ramajayam Institute of**  
**Science & Technology (PRIST)**  
 Institution Deemed to be University  
 U/S 3 of the UGC Act, 1956  
 THANJAVUR - 613 403, TAMIL NADU.

**Students feedback analysis report 2019 – 2020**  
**Percentage of Students \* Feedback**

| S.No | Attributes  | Percentage of Students |           |      |         |      |
|------|---|------------------------|-----------|------|---------|------|
|      |   | Excellent              | Very good | good | Average | poor |
| 1    | How do you rate the sequence of the Courses that you have studied are in sequence to what you have studied in the previous semester?  | 32%                    | 37%       | 31%  | 0       | 0    |
| 2    | How do you rate the syllabus of the courses that you have studied in relation to the competencies expected out of the course?   | 15%                    | 23%       | 45%  | 17%     | 0    |
| 3    | How do you rate the relevance of the units in syllabus relevant to the course?  | 32%                    | 58%       | 10%  | 0       | 0    |
| 4    | How do you rate the sequence of the units in the course?  | 47%                    | 40%       | 13%  | 0       | 0    |
| 5    | How do you rate the allocation of the credits to the courses?   | 33%                    | 52%       | 15%  | 0       | 0    |
| 6    | How do you rate the distribution of the contact hours among the course components (L-T-P)?  | 48%                    | 27%       | 25%  | 0       | 0    |
| 7    | How do you rate the offering of the electives in terms of their relevance to the specialization streams?  | 38%                    | 23%       | 39%  | 0       | 0    |
| 8    | How do you rate the electives offered in relation to the Technological advancements?  | 21%                    | 47%       | 32%  | 0       | 0    |
| 9    | How do you rate the relevance of the Test Books and reference books by their International recognition to the courses?  | 27%                    | 13%       | 32%  | 28%     | 0    |
| 10   | Rate the Size of syllabus in terms of the load on the student   | 37%                    | 20%       | 43%  | 0       | 0    |
| 11   | Rate the courses in terms of extra learning or self learning considering the design of the courses  | 27%                    | 43%       | 30%  | 0       | 0    |
| 12   | Rate the courses in terms of sequence of offering considering whether the preceding courses have been covered   | 40%                    | 33%       | 27%  | 0       | 0    |
| 13   | How do you Rate the loading of the courses in a semester  | 60%                    | 25%       | 15%  | 0       | 0    |
| 14   | How do you Rate the evaluation scheme designed for each of the course   | 27%                    | 30%       | 22%  | 21%     | 0    |
| 15   | How do you rate the objectives stated for each of the course  | 45%                    | 23%       | 32%  | 0       | 0    |
| 16   | How do you rate competencies expected out of the course   | 39%                    | 38%       | 23%  | 0       | 0    |
| 17   | How do you rate the composition of the courses in terms of Basic science, Engineering science, Humanities, Discipline core, discipline elective, open elective, project etc., | 13%                    | 40%       | 43%  | 4%      | 0    |
| 18   | How do you rate the percentage of courses having LAB components   | 15%                    | 52%       | 33%  | 0       | 0    |
| 19   | How do you rate the domain used for designing the experiments for the LAB components  | 24%                    | 17%       | 46%  | 13%     | 0    |
| 20   | how do you rate the experiments in relation to the real life applications   | 37%                    | 22%       | 13%  | 28%     | 0    |

*Am m*

DEAN

**\*60 numbers of Parents took part in this study**

**School of Parents**

Ponnaiyah Ramajayam Institute of

Science & Technology (PRIST)

Institution Deemed to be University

's 3 of the UGC Act, 1956

THANJAVUR - 613 403, TAMIL NADU.

School of Agriculture

Ponnaiyah Ramajayam Institute of

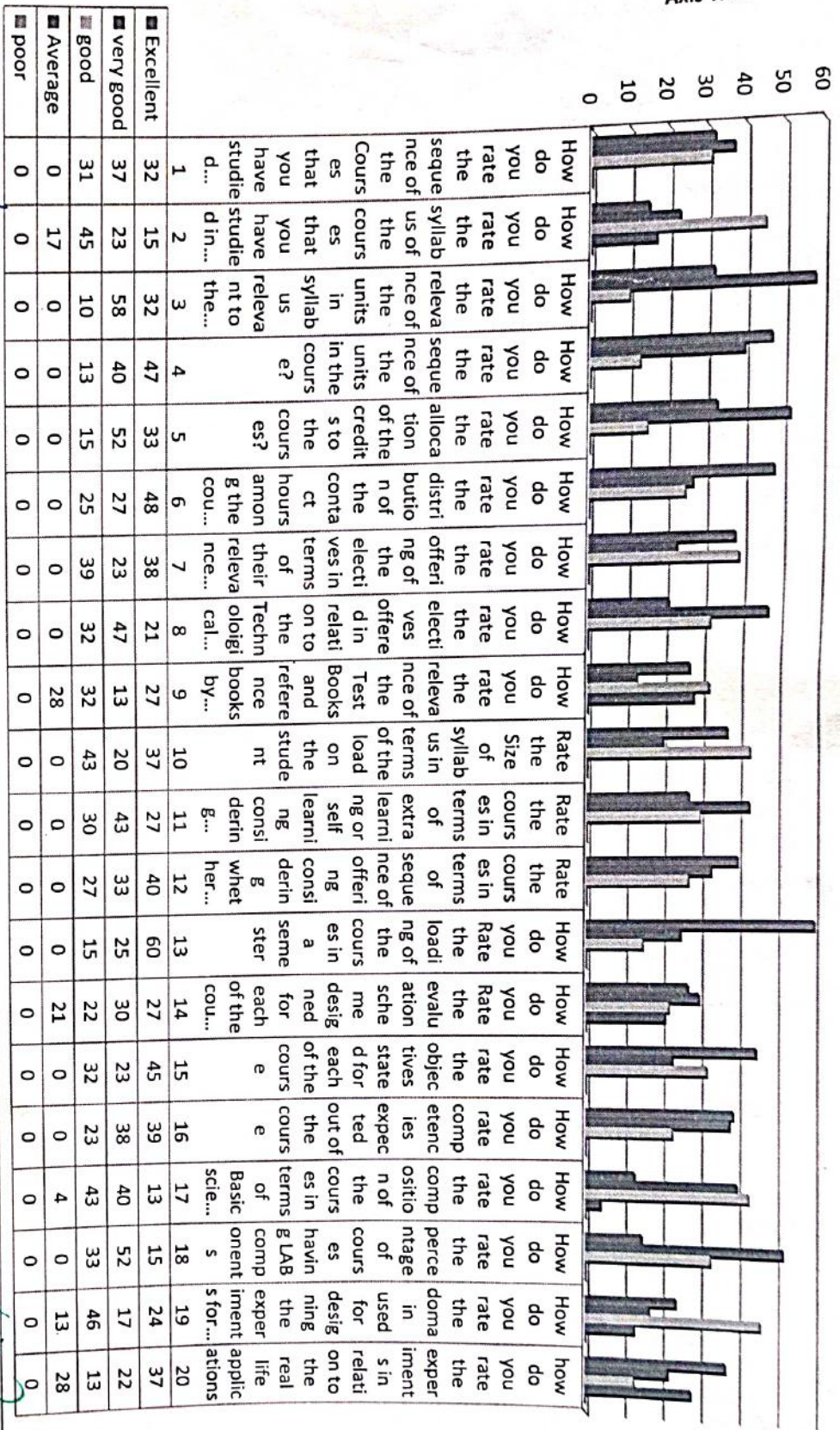
Science & Technology (PRIST)

Institution Deemed to be University

's 3 of the UGC Act, 1956

THANJAVUR - 613 403, TAMIL NADU.

# Student Feedback 2019-2020



*Ar m*

*Vinn*

**HEAD**  
**School of Agriculture**  
 Ponnaiyah Ramajayam Institute of  
 Science & Technology (PRIST)  
 Institution Deemed to be University  
 11/5 3 of the UGC Act, 1956  
 THANJAVUR - 613 403, TAMIL NADU.

**DEAN**  
**School of Agriculture**  
 Ponnaiyah Ramajayam Institute of  
 Science & Technology (PRIST)  
 Institution Deemed to be University  
 11/5 3 of the UGC Act, 1956  
 THANJAVUR - 613 403, TAMIL NADU.

**SUMMARY OF FACULTY FEEDBACK \* 2019 - 2020**

| S.No. | Attributes  | Response       |       |         |          |                   |
|-------|---|----------------|-------|---------|----------|-------------------|
|       |   | Strongly Agree | Agree | Neutral | Disagree | Strongly Disagree |
| 1     | Syllabus is suitable to the course and need based.  | 12             | 10    | 3       | 0        | 0                 |
| 2     | The course/syllabus has good balance between theory and Practical                               | 0              | 15    | 5       | 5        | 0                 |
| 3     | The learning objectives are clear and appropriate to the programme                              | 2              | 4     | 15      | 4        | 0                 |
| 4     | The system followed by the university for the design and development of curriculum is effective | 0              | 12    | 8       | 4        | 1                 |
| 5     | The curriculum has the potential in developing the habit of self-learning among the students    | 0              | 7     | 11      | 4        | 3                 |
| 6     | The curriculum has focus on skill development.  | 0              | 3     | 15      | 5        | 2                 |
| 7     | The books prescribed/listed as reference materials are relevant, update and appropriate         | 0              | 8     | 7       | 9        | 1                 |
| 8     | The curriculum has been updated from time to time.  | 0              | 6     | 17      | 2        | 0                 |
| 9     | Is the subject / its syllabus interesting for majority of students                              | 0              | 14    | 7       | 3        | 1                 |
| 10    | Does the syllabus cover modern & advanced topics?   | 0              | 6     | 14      | 3        | 2                 |

**\*25 numbers of faculty took part in this study**

*Ar*

**HEAD**

**School of Agriculture**  
**Ponnaiyah Ramajayam Institute of**  
**Science & Technology (PRIST)**  
 Institution Deemed to be University  
 U/s 3 of the UGC Act, 1956  
 THANJAVUR - 613 403, TAMIL NADU.

*Ar*

**DEAN**

**School of Agriculture**  
**Ponnaiyah Ramajayam Institute of**  
**Science & Technology (PRIST)**  
 Institution Deemed to be University  
 U/s 3 of the UGC Act, 1956  
 THANJAVUR - 613 403, TAMIL NADU.

**Staff feedback analysis report 2019 – 2020**  
**Percentage of Staff \* Feedback**

| S. No | Attributes  | Strongly Agree | Agree | Neutral | Disagree | Strongly Disagree |
|-------|---|----------------|-------|---------|----------|-------------------|
| 1     | Syllabus is suitable to the course and need based.  | 48             | 40    | 12      | 0        | 0                 |
| 2     | The course/syllabus has good balance between theory and Practical                               | 0              | 60    | 20      | 20       | 0                 |
| 3     | The learning objectives are clear and appropriate to the programme                              | 8              | 16    | 60      | 16       | 0                 |
| 4     | The system followed by the university for the design and development of curriculum is effective | 0              | 48    | 32      | 16       | 4                 |
| 5     | The curriculum has the potential in developing the habit of self learning among the students    | 0              | 28    | 44      | 16       | 12                |
| 6     | The curriculum has focus on skill development.  | 0              | 12    | 60      | 20       | 8                 |
| 7     | The books prescribed/listed as reference materials are relevant, update and appropriate         | 0              | 32    | 28      | 36       | 4                 |
| 8     | The curriculum has been updated from time to time.  | 0              | 24    | 68      | 8        | 0                 |
| 9     | Is the subject / its syllabus interesting for majority of students                              | 0              | 56    | 28      | 12       | 4                 |
| 10    | Does the syllabus cover modern & advanced topics?   | 0              | 24    | 56      | 12       | 8                 |

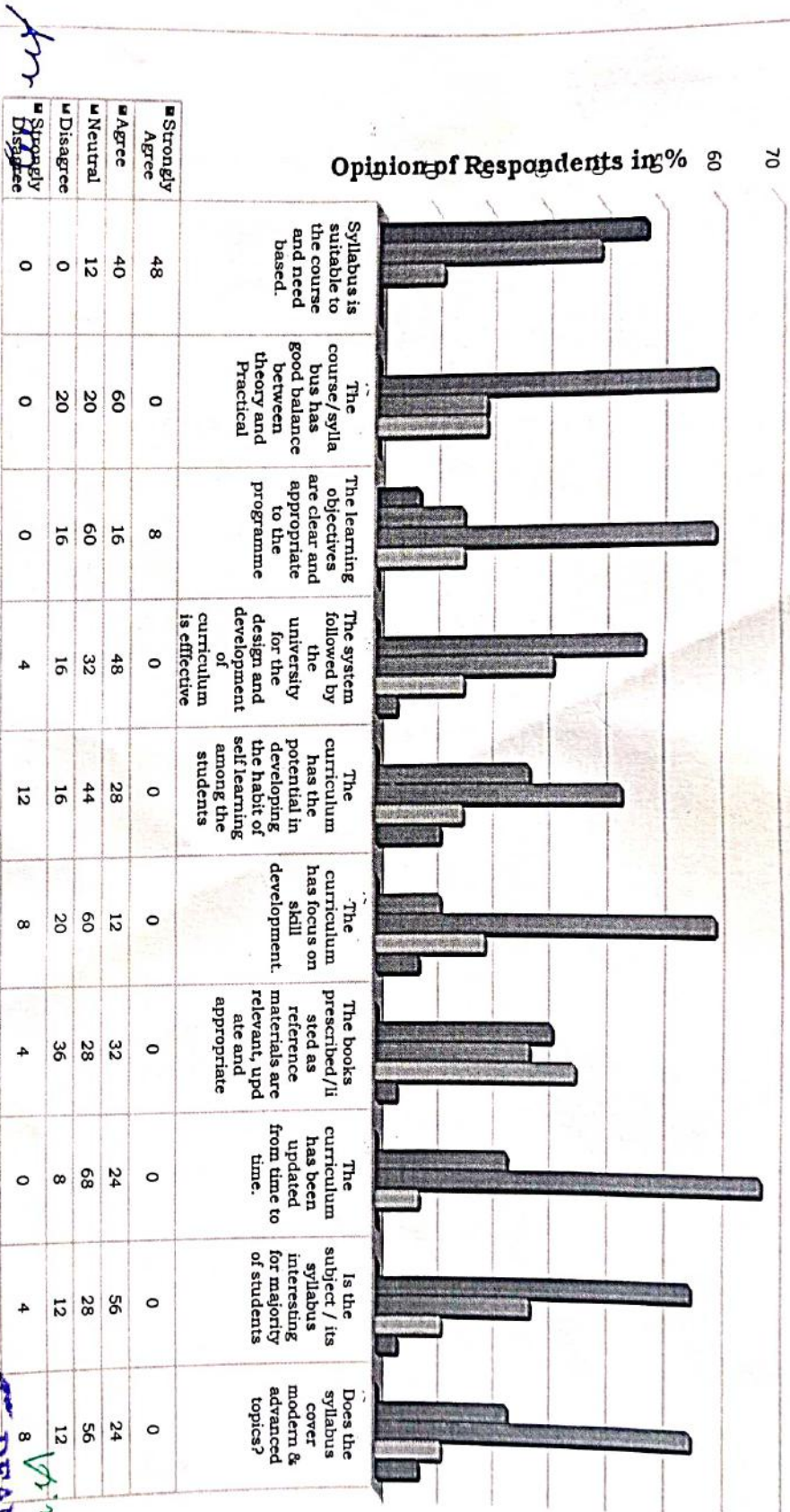
*For*

**HEAD**  
 School of Agriculture  
 Ponnaiyah Ramajayam Institute of  
 Science & Technology (PRIST)  
 Institution Deemed to be University  
 U/s 3 of the UGC Act. 1956  
 THANJAVUR - 613 403, TAMIL NADU.

*Prin*

**DEAN**  
 School of Agriculture  
 Ponnaiyah Ramajayam Institute of  
 Science & Technology (PRIST)  
 Institution Deemed to be University  
 U/s 3 of the UGC Act. 1956  
 THANJAVUR - 613 403, TAMIL NADU.

## staff feedback 2019 - 2020



HEAD

School of Agriculture  
Ponnaiyah Ramajayam Institute of  
Science & Technology (PRIST)  
Institution Deemed to be University  
1/5 3 of the UGC Act. 1956  
TIRUVANANTHAPUR - 613 403, TAMIL NADU.

DEAN

School of Agriculture  
Ponnaiyah Ramajayam Institute of  
Science & Technology (PRIST)  
Institution Deemed to be University  
1/5 3 of the UGC Act. 1956  
TIRUVANANTHAPUR - 613 403, TAMIL NADU.

**SUMMARY OF PARENT FEEDBACK \* 2019 - 2020**

| S. No | Attributes  | Excellent | Very Good | Good | Average | Poor |
|-------|---|-----------|-----------|------|---------|------|
| 1     | How do you rate the program that your ward is undergoing in terms of the load of the courses in different semesters?  | 7         | 23        | 7    | 0       | 0    |
| 2     | How do you rate the availability of the Text and reference books in Market?   | 6         | 24        | 7    | 0       | 0    |
| 3     | How do you rate the quality and relevance of the courses included into the semester?  | 7         | 26        | 4    | 0       | 0    |
| 4     | How do you rate the treatment of the students by the faculty irrespective of the background of the student that includes Gender, Cast, Community creed etc. in teaching and evaluation? | 5         | 30        | 2    | 0       | 0    |
| 5     | How do you rate ambience of the university for effective delivery of the academic programs?   | 5         | 27        | 5    | 0       | 0    |
| 6     | How do you rate the courses in terms of their relevance to the latest technologies of future technologies?  | 9         | 25        | 3    | 0       | 0    |
| 7     | How do you rate the programs based on the comfort of your ward in coping with the workload?   | 3         | 28        | 6    | 0       | 0    |
| 8     | How do you rate the quality of teaching in the university?  | 9         | 27        | 1    | 0       | 0    |
| 9     | How do you rate the outcomes that your ward has achieved from the courses?  | 7         | 28        | 2    | 0       | 0    |
| 10    | How do you rate the transparency of the evaluation system in the University?  | 8         | 22        | 7    | 0       | 0    |

*Ar 22*  
**\*37 numbers of parents took part in this study**

**HEAD**

School of Agriculture  
 Ponnaiah Ramajayam Institute of  
 Science & Technology (PRIST)  
 Institution Deemed to be University  
 U/s 3 of the UGC Act, 1956  
 THANJAVUR - 613 403, TAMIL NADU

*Prin*  
**DEAN**

School of Agriculture  
 Ponnaiah Ramajayam Institute of  
 Science & Technology (PRIST)  
 Institution Deemed to be University  
 U/s 3 of the UGC Act, 1956  
 THANJAVUR - 613 403, TAMIL NADU

**Parents feedback analysis report 2019 - 2020**  
**Percentage of Parent \* Feedback**

| S. No | Attributes  | Excellent (%) | Very Good (%) | Good (%) | Average (%) | Poor (%) |
|-------|---|---------------|---------------|----------|-------------|----------|
| 1     | How do you rate the program that your ward is undergoing in terms of the load of the courses in different semesters?  | 18            | 64            | 18       | 0           | 0        |
| 2     | How do you rate the availability of the Text and reference books in Market?   | 16            | 65            | 19       | 0           | 0        |
| 3     | How do you rate the quality and relevance of the courses included into the semester?  | 19            | 70            | 11       | 0           | 0        |
| 4     | How do you rate the treatment of the students by the faculty irrespective of the background of the student that includes Gender, Cast, Community creed etc. in teaching and evaluation? | 14            | 81            | 5        | 0           | 0        |
| 5     | How do you rate ambience of the university for effective delivery of the academic programs?   | 14            | 72            | 14       | 0           | 0        |
| 6     | How do you rate the courses in terms of their relevance to the latest technologies of future technologies?  | 24            | 67            | 9        | 0           | 0        |
| 7     | How do you rate the programs based on the comfort of your ward in coping with the workload?   | 8             | 76            | 16       | 0           | 0        |
| 8     | How do you rate the quality of teaching in the university?  | 24            | 73            | 3        | 0           | 0        |
| 9     | How do you rate the outcomes that your ward has achieved from the courses?  | 19            | 76            | 5        | 0           | 0        |
| 10    | How do you rate the transparency of the evaluation system in the University?  | 22            | 59            | 19       | 0           | 0        |

*Dr. S. S. Srinivasan*  
**\*37** ~~100~~ **Parents** took part in this study

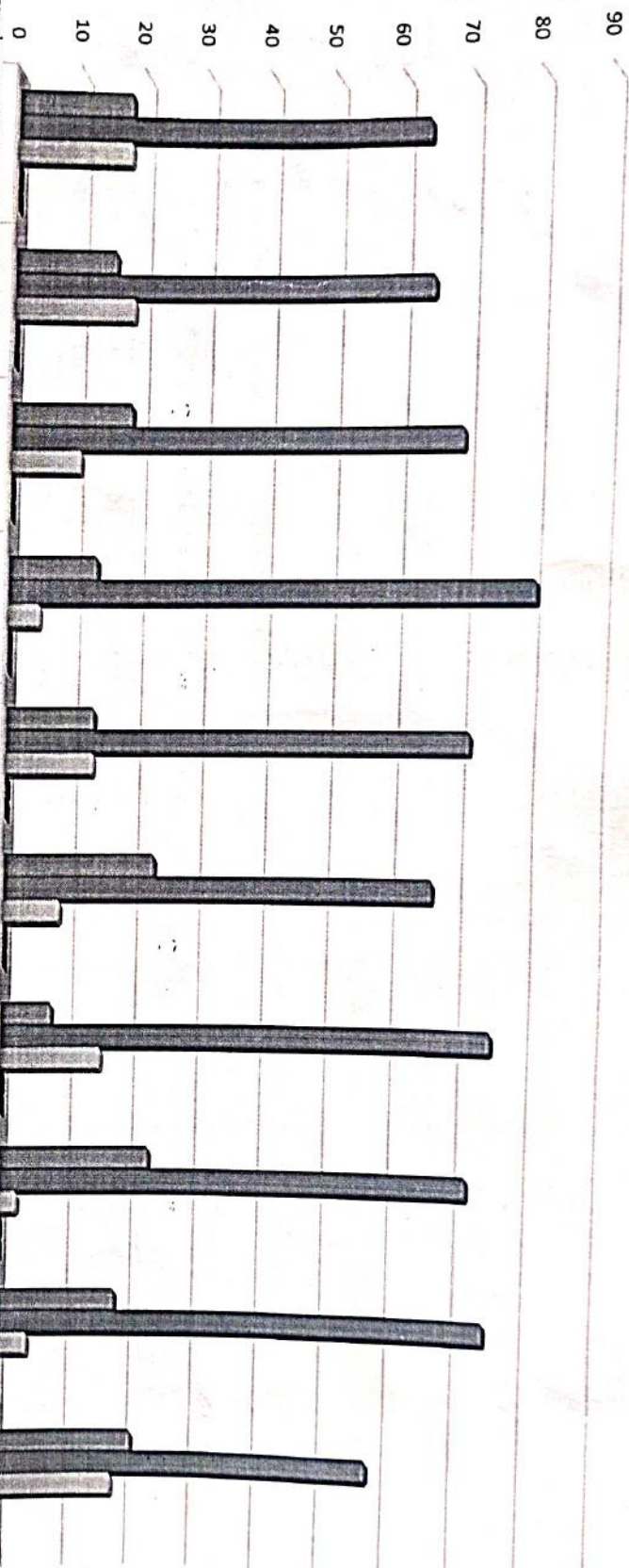
**School of Agricutture**  
 Ponnaiyah Ramalayam Institute of  
 Science & Technology (PRIST)  
 Institution Deemed to be University  
 11/5 3 of the UGC Act. 1955  
 THANJAVUR - 613 403, TAMIL NADU

**DEAN**  
**School of Agricutture**  
 Ponnaiyah Ramalayam Institute of  
 Science & Technology (PRIST)  
 Institution Deemed to be University  
 11/5 3 of the UGC Act. 1955  
 THANJAVUR - 613 403, TAMIL NADU



# Parent feedback 2019 - 2020

opinion of respondents %



you rate the load of the courses in different departments of the institute on the basis of the following criteria: Gender, Cast, Community creed etc. in teaching and evaluation?

| Response          | Agriculture | Mechanical | Civil | Electrical | Chemical | Metallurgical | Food Technology | Textile Technology | Leather Technology | Apparel Technology |
|-------------------|-------------|------------|-------|------------|----------|---------------|-----------------|--------------------|--------------------|--------------------|
| Strongly Agree    | 18          | 19         | 14    | 14         | 24       | 8             | 24              | 19                 | 19                 | 22                 |
| Agree             | 64          | 70         | 81    | 72         | 67       | 76            | 73              | 76                 | 59                 | 59                 |
| Disagree          | 0           | 0          | 0     | 0          | 0        | 0             | 0               | 0                  | 0                  | 0                  |
| Strongly Disagree | 0           | 0          | 0     | 0          | 0        | 0             | 0               | 0                  | 0                  | 0                  |

School of Agriculture  
Ponnaiyah Ramajayam Institute of  
Science & Technology (PRIST)  
1/5 3 of the UGC Act, 1956  
THANJAVUR - 613 403, TAMIL NADU

School of Agriculture  
Ponnaiyah Ramajayam Institute of  
Science & Technology (PRIST)  
1/5 3 of the UGC Act, 1956  
THANJAVUR - 613 403, TAMIL NADU

**SUMMARY OF EMPLOYERS FEEDBACK\* 2019-2020**

| S. No | Attributes  | Excellent | Very good | Good | Average | Poor |
|-------|---|-----------|-----------|------|---------|------|
| 1     | How do you rate relevance of the courses in relation to the program?  | 5         | 4         | 2    | 0       | 0    |
| 2     | How do you rate the sufficiency of the courses related to industry that are included in the program?  | 3         | 3         | 5    | 0       | 0    |
| 3     | How do you rate the competencies in relation to the course content?   | 2         | 7         | 2    | 0       | 0    |
| 4     | How do you rate the sequence of the units in the syllabus?  | 2         | 9         | 0    | 0       | 0    |
| 5     | How do you rate the relevance of the topics to the industry?  | 6         | 3         | 2    | 0       | 0    |
| 6     | Rate the offering of the in relation to the specialization streams?   | 2         | 7         | 2    | 0       | 0    |
| 7     | How do you rate the offering of the electives in relation to the technological advancements?  | 2         | 5         | 4    | 0       | 0    |
| 8     | How do you rate the courses which are skills related suiting to the industry included into the programs?  | 3         | 6         | 2    | 0       | 0    |
| 9     | How do you rate the applicability of the domains and the tools used for designing the experiments in terms of existing practices in the Industry? | 6         | 5         | 0    | 0       | 0    |
| 10    | How do you rate the experiments in terms of their relevance to the real-life application?   | 2         | 7         | 1    | 0       | 0    |

HEAD

\*1 School of Agri Employers took part in this study

Ponnaiyah Ramajayam Institute of  
Science & Technology (PRIST)  
Institution Deemed to be University  
1/5 3 of the UGC Act, 1956

CHENNAI - 613 403, TAMIL NADU

DEAN

School of Agnculture  
Ponnaiyah Ramajayam Institute of  
Science & Technology (PRIST)  
Institution Deemed to be University  
1/5 3 of the UGC Act, 1956  
CHENNAI - 613 403, TAMIL NADU

**Employers' feedback analysis report 2019 - 2020**  
**Percentage of Employers \* Feedback**

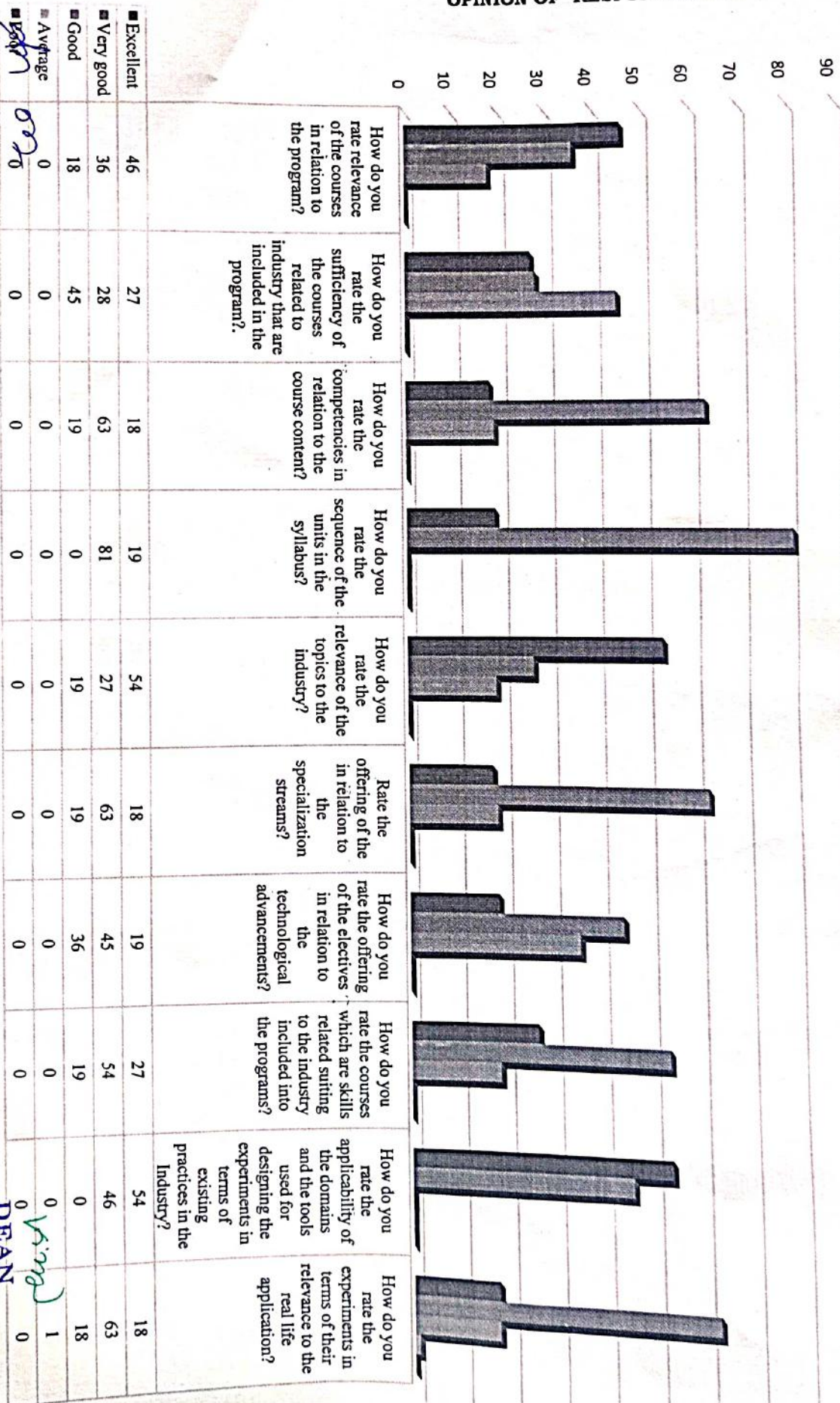
| S. No | Attributes  | Excellent | Very good | Good | Average        | Poor |
|-------|---|-----------|-----------|------|----------------|------|
| 1     | How do you rate relevance of the courses in relation to the program?  | 46%       | 36%       | 18%  | 0              | 0    |
| 2     | How do you rate the sufficiency of the courses related to industry that are included in the program?  | 27%       | 28%       | 45%  | 0              | 0    |
| 3     | How do you rate the competencies in relation to the course content?   | 18%       | 63%       | 19%  | 0              | 0    |
| 4     | How do you rate the sequence of the units in the syllabus?  | 19%       | 81%       | 0    | 0              | 0    |
| 5     | How do you rate the relevance of the topics to the industry?  | 54%       | 27%       | 19%  | 0              | 0    |
| 6     | Rate the offering of the in relation to the specialization streams?   | 18%       | 63%       | 19%  | 0              | 0    |
| 7     | How do you rate the offering of the electives in relation to the technological advancements?  | 19%       | 45%       | 36%  | 0              | 0    |
| 8     | How do you rate the courses which are skills related suiting to the industry included into the programs?  | 27%       | 54%       | 19%  | 0              | 0    |
| 9     | How do you rate the applicability of the domains and the tools used for designing the experiments in terms of existing practices in the Industry? | 54%       | 46%       | 0    | 0              | 0    |
| 10    | How do you rate the experiments in terms of their relevance to the real-life application?   | 18%       | 63%       | 18%  | 1% <i>Dean</i> | 0    |

**HEAD**  
 School of Agriculture  
 Ponnaiyah Ramajayam Institute of  
 Science & Technology (PRIST)  
 Institution Deemed to be University  
 U/s 3 of the UGC Act, 1956  
 THANJAVUR - 613 403, TAMIL NADU

School of Agriculture  
 Ponnaiyah Ramajayam Institute of  
 Science & Technology (PRIST)  
 Institution Deemed to be University  
 U/s 3 of the UGC Act, 1956  
 THANJAVUR - 613 403, TAMIL NADU

# EMPLOYERS FEEDBACK 2019 - 2020

OPINION OF RESPONDENTS IN %



HEAD

DEAN

School of Agriculture  
Ponnaiyah Ramajayam Institute of  
Science & Technology (PRIST)  
Institution Deemed to be University  
1/3 of the UGC Act, 1956  
HARAJAVUR - 613 403, TAMIL NADU.

School of Agriculture  
Ponnaiyah Ramajayam Institute of  
Science & Technology (PRIST)  
Institution Deemed to be University  
1/3 of the UGC Act, 1956  
HARAJAVUR - 613 403, TAMIL NADU.