



PRIST
DEEMED TO BE
UNIVERSITY
NAAC ACCREDITED
THANJAVUR - 613403 - TAMILNADU

**Ponnaiyah Ramajayam Institute of Science
and Technology [PRIST]**


Department of Education


Feedback Report

Academic Year : 2020-21

Table of Contents

S.No	Description
1	Report of Feedback from Stakeholders
	Students Feedback on Curriculum
	Questionnaire
	Summary of the Feedback on curriculum
2	Alumni Feedback on Curriculum
	Questionnaire
	Summary of the Survey
	Analysis of the Student Satisfaction Survey
3	Parents Feedback on Curriculum
	Questionnaire
	Summary of the Survey
	Analysis of the Student Satisfaction Survey
4	Employer Feedback on Curriculum
	Questionnaire
	Summary of the Survey Employer feedback
	Analysis of employer feedback on curriculum
5	Faculty Feedback on Curriculum
	Questionnaire
	Summary of the Survey Faculty feedback
	Analysis of the Faculty feedback curriculum


HOD,
School of Education
PRIST Deemed to be University
THANJAVUR - 613 403.


DEAN,
School of Education
PRIST Deemed to be University
THANJAVUR - 613 403.

Feedback Report

Academic Year : 2020-21


Feedback Report:


To enrich the quality of teaching and learning as well as to enhance employability of the students, feedback from the stakeholders is invaluable. PRIST Deemed to be University Collected online feedback relating to the satisfaction of stakeholders (Students, Alumni, Parents, Employer's, Faculty) towards the curriculum, teaching. Learning and evaluation. The information provided is used as important feedback for quality improvement of teaching and learning process of the institution.

Action Taken: The stakeholder's responses were analyzed to prepare the summarized report which was communicated with university authority.

Feedback Analysis Report:

Data was collected using online feedback forms prepared by feedback committee of the college. The responses received from the respondents are presented in terms of bar diagrams. Total 29 responses student submitted their views on curriculum.


HOD,
School of Education
PRIST Deemed to be University
THANJAVUR - 613 403.



DEAN,
School of Education
PRIST Deemed to be University
THANJAVUR - 613 403.


1. Students Feedback on Curriculum

Analysis shows that:


- Most of the alumni are satisfied with the course content and opine that the career-oriented syllabus was helpful in getting a job after their graduation/post-graduation/Research.
- Most are happy with Computer Laboratories, University library, Seminars, Guest lectures and Workshops conducted and Projects and Field visits.

Students Feedback on Curriculum	High-4	Moderate-3	Poor-2	Low-1	Total
The sequence of the courses (subjects) in the curriculum	99	11	5	4	118
Size of syllabus in terms of the load on the student.	105	12	1	0	118
The objectives stated for each of the course.	95	20	3	0	118
The offering of the electives in terms of their relevance to the specialized streams.	111	7	0	0	118
How do you rate the electives offered in relation to the technological advancements.	101	12	5	0	118
Content of the courses encourages extra learning / self learning.	98	12	8	0	118
How do you rate the percentage (Number) of courses having practical components?	109	8	1	0	118
How do you rate the domain used for Designing/performing the experiments in the laboratory.	100	12	6	0	118
Total	818	94	27	5	944


HOD,
 School of Education
 PPRIST Deemed to be University
 THANJAVUR - 613 403.


DEAN,
 School of Education
 PPRIST Deemed to be University
 THANJAVUR - 613 403.

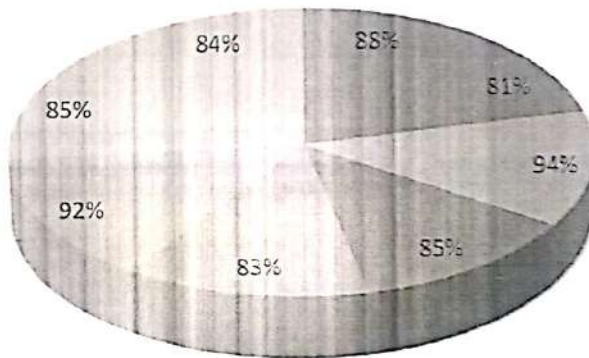
Students Feedback on Curriculum	High-4	Moderate-3	Poor-2	Low
The sequence of the courses (subjects) in the curriculum	84%	9%	4%	3%
Size of syllabus in terms of the load on the student.	88%	10%	2%	0%
The objectives stated for each of the course.	81%	6%	3%	0%
The offering of the electives in terms of their relevance to the specialized streams.	94%	6%	0%	0%
How do you rate the electives offered in relation to the technological advancements.	85%	13%	2%	0%
Content of the courses encourages extra learning / self learning.	83%	15%	2%	0%
How do you rate the percentage (Number) of courses having practical components?	92%	6%	2%	0%
How do you rate the domain used for Designing/performing the experiments in the laboratory.	85%	12%	3%	0%


DEAN,
 School of Education
 PRIST Deemed to be University
 THANJAVUR - 613 403.


leBT
HOD,
 School of Education
 PRIST Deemed to be University
 THANJAVUR - 613 403.


Students Feedback

High-4, Moderate-3, Poor -2, Low-1



- The sequence of the courses (subjects) in the curriculum
- Size of syllabus in terms of the load on the student.
- The objectives stated for each of the course.
- The offering of the electives in terms of their relevance to the specialized streams.
- How do you rate the electives offered in relation to the technological advancements.
- Content of the courses encourages extra learning / self learning.
- How do you rate the percentage (Number) of courses having practical components?
- How do you rate the domain used for Designing/performing the experiments in the laboratory.


HOD,
 School of Education
 PRIST Deemed to be University
 THANJAVUR - 611 303



DEAN,
 School of Education
 PRIST Deemed to be University
 THANJAVUR - 611 303


2. Alumni Feedback on curriculum:

Alumni provide the inputs regarding improvement in facilities and employability. The feedback from alumni on University syllabus and curriculum is collected every year in hard copy form and recently through

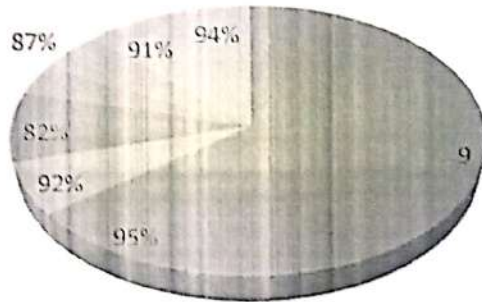
Alumni Feedback on curriculum	Excellent 4	Good 3	Fair 2	Poor 1	Total
The quality of the Program content	112	5	1	0	118
The relevance of the curriculum	109	7	2	0	118
The overall development you received	97	12	8	1	118
The curriculum is skill-oriented	103	15	0	0	118
The curriculum is job oriented	107	8	3	0	118
The standard of the curriculum is on par with national / international Institutions	112	5	1	0	118
The overall standards of the curriculum	108	6	4	0	118
Total	748	58	19	1	826

Alumni Feedback on curriculum	Excellent 4	Good 3	Fair 2	Poor 1
The quality of the Program content	95%	4%	1%	0%
The relevance of the curriculum	92%	5%	1%	0%
The overall development you received	82%	10%	7%	3%
The curriculum is skill-oriented	87%	13%	0%	0%
The curriculum is job oriented	91%	6%	3%	0%
The standard of the curriculum is on par with national / international Institutions	94%	4%	0%	0%
The overall standards of the curriculum	92%	5%	3%	0%


HOD,
 School of Education
 PRIST Deemed to be University
 THIRUVANANTHAPURAM - 613 403.


DEAN,
 School of Education
 PRIST Deemed to be University
 THIRUVANANTHAPURAM - 613 403.

Alumni Feedback on curriculum



- The quality of the
- The relevance of the
- The overall development
- The curriculum is skill-
- The curriculum is job

Excellent-1 Good-3,Fair-2,Poor-1

[Signature]
HOD,
 School of Education
 PRIST Deemed to be University
 THANJAVUR - 613 403.

[Signature]
DEAN,
 School of Education
 PRIST Deemed to be University
 THANJAVUR - 613 403.

3. Parents Feedback on curriculum:

Being the special stakeholders of the institution, parents' feedback especially on curricular aspects is collected regularly basis. Feedback is collected in hard copy as well as through

Parents Feedback on curriculum	Excellent- 4	Good- 3	Fair- 2	Poor- 1	Total
How do you rate the program that your ward is undergoing in terms of the load of the courses in different semesters?	107	9	2	0	118
How do you rate the availability of the Text and Reference books in the Market?	103	15	0	0	118
How do you rate the quality of the courses included into the semester?	96	12	10	0	118
How do you rate the teaching techniques adopted by teachers?	105	10	3	0	118
How do you rate the ambience of the university for effective delivery of the academic programs?	97	12	8	1	118
How do you rate the courses in terms of their relevance to the emerging technologies?	112	4	2	0	118
How do you rate the programs based on the comfort of your ward in coping with the workload?	114	3	1	0	118
How do you rate the level of motivation of your ward while undergoing the programme?	98	11	7	2	118
How do you rate the transparency of the internal evaluation system?	104	12	2	0	118

HOD,


PRINCE ALFRED COLLEGE
 UNIVERSITY OF
 TRIPURA


10/05

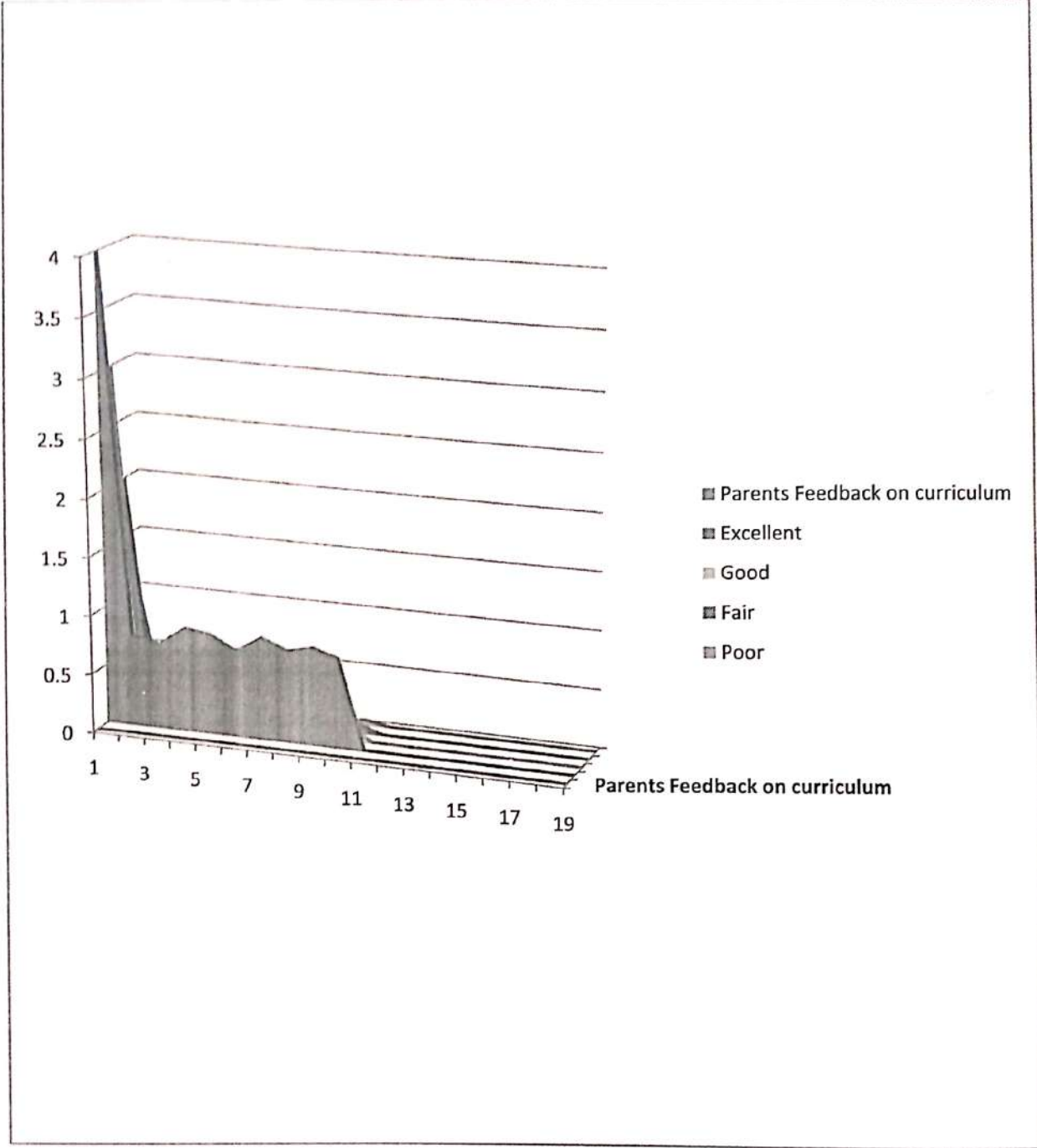
DEAN,

School of Education
 PRINCE ALFRED COLLEGE
 UNIVERSITY OF TRIPURA

Parents Feedback on curriculum	Excellent 4	Good 3	Fair 2	Poor 1
How do you rate the program that your ward is undergoing in terms of the load of the courses in different semesters?	91%	8%	1%	0%
How do you rate the availability of the Text and Reference books in the Market?	87%	13%	0%	0%
How do you rate the quality of the courses included into the semester?	81%	10%	8%	0%
how do you rate the teaching techniques adopted by teachers ?	89%	8%	3%	0%
How do you rate the ambience of the university for effective delivery of the academic programs?	82%	10%	7%	1%
How do you rate the courses in terms of their relevance to the emerging technologies?	94%	3%	3%	0%
How do you rate the programs based on the comfort of your ward in coping with the workload?	97%	3%	0%	0%
How do you rate the level of motivation of your ward while undergoing the programme?	83%	10%	7%	0%
How do you rate the transparency of the internal evaluation system?	88%	10%	2%	0%


HOD,
 School of Education
 PRIST Deemed to be University
 THANJAVUR - 613 402


DEAN,
 School of Education
 PRIST Deemed to be University
 THANJAVUR - 613 402



[Handwritten Signature]

HOD,
 School of Education
 PPRST Deemed to be University
 THANJAVUR - 613 403.

[Handwritten Signature]

DEAN,
 School of Education
 PPRST Deemed to be University
 THANJAVUR - 613 403.

4. Employers' Feedback on curriculum:

Employers' feedback is taken in hard copy format and also through

Analysis shows that:

- Most of the employers have the opinion that the curriculum has relevance to the Educational needs and are happy with the soft-skills provided by the curriculum and the institution.
- Some of them have suggested that there can be more curriculum related activities.

Employers' Feedback	Strongly Agree -4	Agree -3	Neutral -2	Disagree -1	Strongly Disagree 0	Total
Rate your opinion on the relevancy/ sufficiency of the courses meeting the industry requirements?	106	9	2	1	0	118
Rate the applicability of the tools/activities/case studies presented in the curriculum facilitating more employability	102	15	0	1	0	118
How effective is the Curriculum in developing analytical and problem-solving skills	95	12	10	5	0	118
Does the curriculum include value added courses/ soft skill training/ domain specific electives for enhancing	104	10	3	1	0	118
Rate the scope of the syllabus in enhancing entrepreneurship skills/ lifelong learning/ human values and ethics.	110	5	1	1	1	118
Curriculum reflects current trends	109	7	2	0	0	118

HOD,


School of Education
PRIST Deemed to be University
THANJAVUR - 613 403.


DEAN,

School of Education
PRIST Deemed to be University
THANJAVUR - 613 403.


and practices in the respective disciplines.						
Does the curriculum effectively cover topics on fundamentals and latest technology?	97	12	8	1	0	118
The academic initiatives of the institution contributes towards achieving the Mission and Vision of the institution	103	15	0	0	0	118
Rate the proficiency of our graduates to adapt to industry requirements	112	5	1	0	0	118
Suggest your views on the inclusion of new programmes/ courses/ content in syllabus Other comments	99	10	7	1	0	118
The curriculum facilitates an overall holistic development of the student?	102	12	4	0	0	118
Total	1139	112	45	11	1	1298


Employers' Feedback	Strongly Agree -4	Agree- 3	Neutral- 2	Disagree - 1	Strongly Disagree 0
Rate your opinion on the relevancy/ sufficiency of the courses meeting the industry requirements?	89%	9%	1%	1%	0%
Rate the applicability of the tools/activities/case studies presented in the curriculum	86%	13%	0%	1%	0%

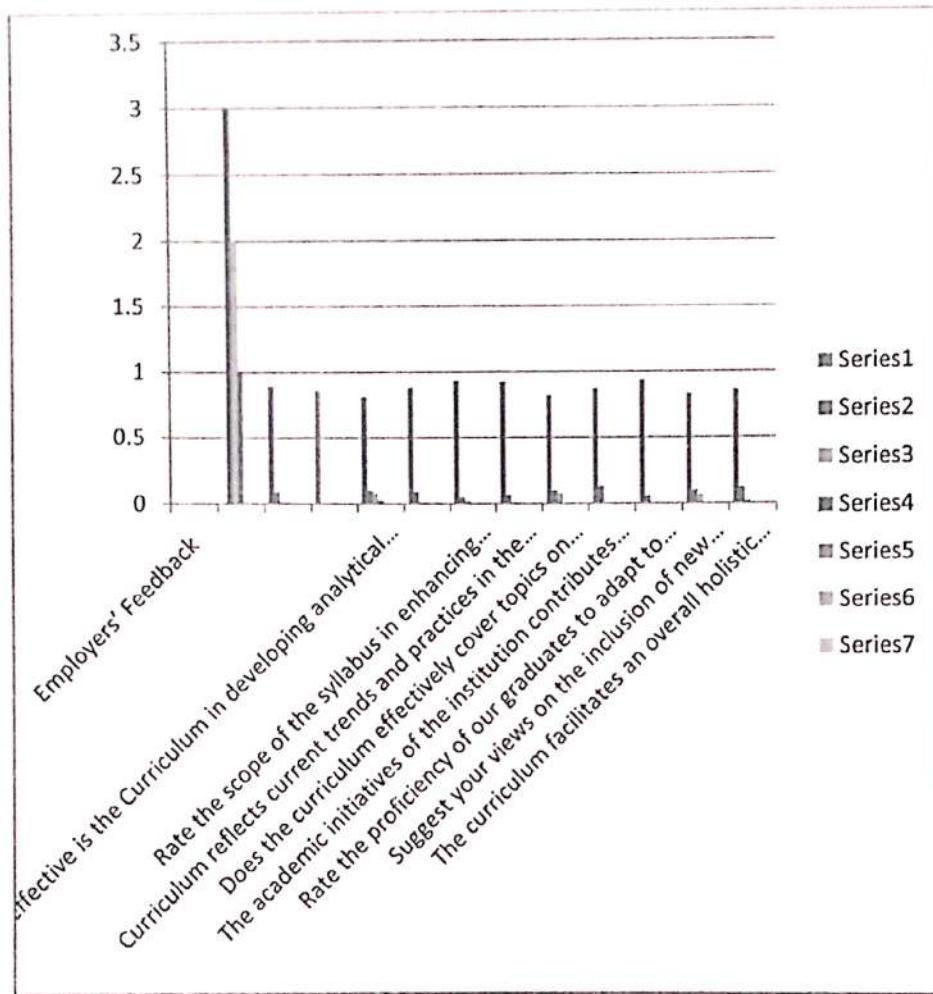

HOD,
 School of Education
 P.R.I.S.T. Deemed to be University
 THANJAVUR - 613 403.


DEAN,
 School of Education
 P.R.I.S.T. Deemed to be University
 THANJAVUR - 613 403.

facilitating more employability					
How effective is the Curriculum in developing analytical and problem-solving skills	81%	10%	8%	2%	0%
Does the curriculum include value added courses/ soft skill training/ domain specific electives for enhancing	88%	9%	1%	1%	1%
Rate the scope of the syllabus in enhancing entrepreneurship skills/ lifelong learning/ human values and ethics.	93%	5%	2%	0%	0%
Curriculum reflects current trends and practices in the respective disciplines.	92%	7%	1%	0%	0%
Does the curriculum effectively cover topics on fundamentals and latest technology?	82%	10%	8%	0%	0%
The academic initiatives of the institution contributes towards achieving the Mission and Vision of the institution	87%	13%	0%	0%	0%
Rate the proficiency of our graduates to adapt to industry requirements	94%	6%	0%	0%	0%
Suggest your views on the inclusion of new programmes/ courses/ content in syllabus Other comments	83%	10%	7%	0%	0%
The curriculum facilitates an overall holistic development of the student?	86%	12%	2%	0%	0%


HOD,
 School of Education
 PRIST Deemed to be University
 THANJAVUR - 613 033.


DEAN,
 School of Education
 PRIST Deemed to be University
 THANJAVUR - 613 033.



[Handwritten Signature]

HOD,
 School of Education
 PRIST Deemed to be University
 THANJAVUR - 613 403.

[Handwritten Signature]


DEAN,
 School of Education
 PRIST Deemed to be University
 THANJAVUR - 613 403.

5. Faculty Feedback on Curriculum

Faculty feedback is taken in hard copy format and also through

- Most of the Faculty have the opinion that the curriculum has relevance to the Educational needs and are happy with the soft-skills provided by the curriculum and the institution.

Some of them have suggested that there can be more curriculum related activities.


HOD,
School of Education
PRIST Deemed to be University
THANJAVUR - 613 403.

1cDT
DEAN,
School of Education
PRIST Deemed to be University
THANJAVUR - 613 403.

Faculty Feedback on Curriculum	Excellent	Good	Satisfactory	Poor	Total
Syllabus is suitable to the course and need based.	22	2	0	0	24
The course syllabus has good balance between theory and application or practical.	11	7	6	0	24
The learning objectives are clear and appropriate to the program.	7	8	8	1	24
The system followed by the university for the design and development of curriculum is effective.	8	8	4	4	24
The curriculum has the potential in developing the habit of self-learning among the students.	13	4	3	4	24
The curriculum has focus on skill development.	7	9	6	2	24
The books prescribed listed as reference materials are relevant, updated and appropriate.	8	8	5	3	24
The curriculum has been updated from time to time.	12	4	2	6	24
Is the subject / its syllabus interesting for majority of students?	8	9	6	1	24
Does the syllabus cover modern & advanced topics?	8	10	5	1	24
Is the syllabus designed for the preparation of competitive examination?	9	7	6	2	24
Is the syllabus designed in a way to improve Employment?	10	7	7	0	24
Total.	122	83	57	22	288



HOD,


School of Education
PRIST - Deemed to be University
Trichy - 621 013


DEAN,

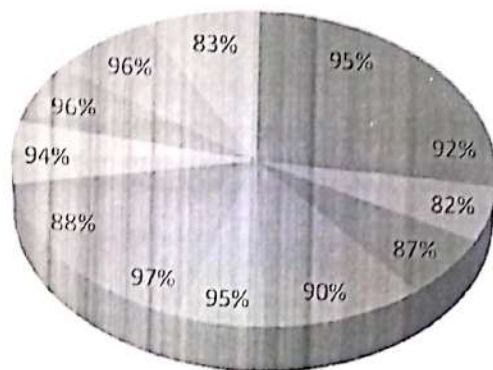
School of Education
PRIST - Deemed to be University
Trichy - 621 013

Faculty Feedback on Curriculum	Excellent	Good	Satisfactory	Poor
Syllabus is suitable to the course and need based.	92%	8%	0%	0%
The course/syllabus has good balance between theory and application or practical.	46%	29%	25%	0%
The learning objectives are clear and appropriate to the program.	29%	33%	33%	4%
The system followed by the university for the design and development of curriculum is effective.	33%	33%	17%	17%
The curriculum has the potential in developing the habit of self-learning among the students.	54%	17%	13%	17%
The curriculum has focus on skill development.	29%	38%	25%	8%
The books prescribed/listed as reference materials are relevant, updated and appropriate.	33%	33%	21%	13%
The curriculum has been updated from time to time.	54%	17%	8%	25%
Is the subject / its syllabus interesting for majority of students?	33%	38%	25%	4%
Does the syllabus cover modern & advanced topics?	33%	42%	21%	4%
Is the syllabus designed for the preparation of competitive examination?	38%	29%	25%	8%
Is the syllabus designed in a way to improve Employment?	42%	29%	29%	0%


HOD,
 School of Education
 Anna University
 Chennai-600 025


DEAN,
 School of Education
 Anna University
 Chennai-600 025

Faculty Feedback on Curriculum



■ Syllabus is suitable to the course and need based.

■ The course/syllabus has good balance between theory and application or practical.

■ The learning objectives are clear and appropriate to the program.

■ The system followed by the university for the design and development of curriculum is effective.

■ The curriculum has the potential in developing the habit of self-learning among the students.

■ The curriculum has focus on skill development.

■ The books prescribed/listed as reference materials are relevant, updated and appropriate.

HOD,
School of Education
PRIST Deemed to be University
THANJAVUR - 613 403.

DEAN,
School of Education
PRIST Deemed to be University
THANJAVUR - 613 403.